



Locally Owned. Globally Connected.

FOR SALE

1305 Pennsylvania Avenue

Wilmington, DE 19806



MULTIFAMILY PROPERTY FOR SALE

OFFERING SUMMARY

Available:	3,372 SF
Number Of Units:	7
Cap Rate:	7.6%
Sale Price:	\$725,000
Parcel #:	26-020.40-056
Zoning:	R5-B Apt House Medium Density

PROPERTY OVERVIEW

Seven unit apartment building in the Trolley Square area of the City of Wilmington on .06 +/- acres with small courtyard.

PROPERTY HIGHLIGHTS

- Six one-bedroom units + one efficiency
- Mix of apartment styles including units with lofts
- Several units with eat-in kitchen and living room
- 7 electric meters + 1 house meter
- 7 gas meters + 1 house meter
- Updated crown boiler - radiator heat / new roof 2014
- Natural gas hot water heater
- Landlord pays heat, hot water, taxes and insurance
- Tenant pays electric and cooking gas

For more information, please contact:

Chris Moore, CCIM

Tel 302.622.3510

Cell 302.383.1911

moore@pattersonwoods.com

3801 Kennett Pike
Bldg. D, Suite 100
Wilmington, DE 19807

Tel 302.622.3500
www.pattersonwoods.com



The information in this document was obtained from sources we deem reliable; however, no warranty or representation, expressed or implied, is made as to the accuracy of the information contained herein.

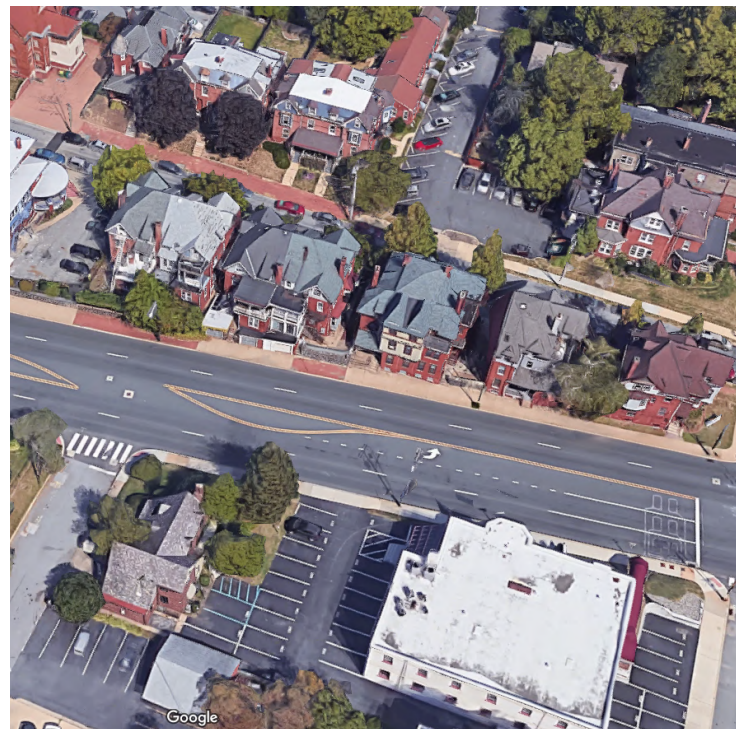


Locally Owned. Globally Connected.

FOR SALE

1305 Pennsylvania Avenue

Wilmington, DE 19806



Chris Moore, CCIM
Tel 302.622.3510
Cell 302.383.1911
moore@pattersonwoods.com



The information in this document was obtained from sources we deem reliable; however, no warranty or representation, expressed or implied, is made as to the accuracy of the information contained herein.



Locally Owned. Globally Connected.

FOR SALE

1305 Pennsylvania Avenue

Wilmington, DE 19806



Chris Moore, CCIM
Tel 302.622.3510
Cell 302.383.1911
moore@pattersonwoods.com



The information in this document was obtained from sources we deem reliable; however, no warranty or representation, expressed or implied, is made as to the accuracy of the information contained herein.